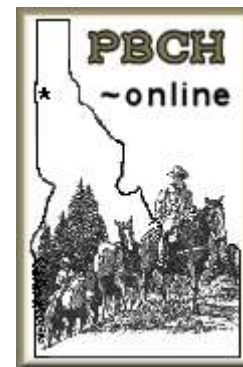


PBCH Newsletter August, 2020

Page 1

Issue No. 8

Tail and Trails



Notes from the President Julie Volpi

charlieandjulie01@gmail.com or cell number 805-674-6807

Hi All!

I hope you are all well and enjoying this summer weather! We have had a pretty busy month. We had a work party at 4th of July Pass that was rescheduled. And a fun camp out ride at Pee Wee Creek.

This month we have a Fun Ride at 4th of July Pass on August 8th. Boots in the stirrups at 9am. Members only. Joni Lueck Trail Boss.

If anyone wants to Trail Boss a members only ride this month let me know!

September we have the Dalton Picnic on the 12th. Karen Kimball Trail Boss. And Antoine Peak 4th Annual Potluck and ride on the 19th. Joni Lueck Trail Boss.

The August Meeting will be on the 19th and will be held in the Picnic Area of the Dalton City Hall Park. Plenty of fresh air and room to spread out.

Be careful out there and stay safe! Julie Volpi

Newsletter Editor

Joni Lueck

jklhorserider@gmail.com

Membership

Please go to www.pbch.org and print out 2020 **membership form** and mail in. It will run through Dec., 31, 2020. Please email Bea Christopherson, treasurer christobea@yahoo.com You can also sign up at any ride or event throughout the year! Mail to PBCH, P.O. Box 1903, Hayden, ID 83835.

**Hay Testing

If you want to have your hay tested give Bryant from Country Store in Spokane a call.
1-509-951-3058.

***Life Flight membership** forms available. Cost for BCH members is \$59 per year. A must-have! Applications available at chapter meetings or email Joni at jklhorserider@gmail.com for an application.

***Classified Ads:** Please let me know if you have anything you want to sell by the 1st of each month.

=====

It requires a 30-day health certificate to travel into Washington with your livestock. If your vet is a member of Global Vet Link, you can get a six-month health certificate that will cover your livestock.

Calendar of Events August

Saturday, August 8 fun ride at 4th of July Recreation Area. Bring your lunch. We can picnic on the trail or back at the rigs. 2 to 3 hour ride. Easy soft terrain. Plenty of parking; no water at trailhead. Joni Lueck, trail boss. Email jklhorserider@gmail.com Members only. Map on web site www.pbch.org Head 15 miles east on I-90 from Coeur d'Alene to trailhead. Allow 15 extra minutes for road construction on I-90.

Calendar continued on page 4

PBCH Newsletter August, 2020

Page 2

Issue No. 8

Tails and Trails

Support our sponsors

Classified Ad. Horse boarding available in Athol six miles from Farragut. Padded stalls, heated drinking water, each stall has pasture. Heated tack room. Round pen available. \$250/month your hay. \$325 hay supplied. Will feed your grain. Contact Arnie Wilkens 208-755-2193.



COREY DWINELL, LUTCF

Insurance and Financial Services Agent

841 N BOULDER CT # A

POST FALLS, ID 83854

Tel 208.773.3820

Fax 208.457.1594 Licensed in ID & WA

cdwinell@farmersagent.com

Registered Representative, Farmers Financial Solutions, LLC
30801 Agoura Road, Bldg. 1, Agoura Hills, CA 91301-2054

BOB & TARA HICKMAN

Saddlemaker

Cable Rigged Saddles

Custom Saddles

Pack Equipment

Suspenders

Custom Chaps

3960 West 5th Ave. B-3

Post Falls, ID 83854

tel. (208) 773-9367

1-888-397-2022

www.hickmansaddlery.net



bob@hickmansaddlery.net

**SUBARU
PARKER**

**MITCH KRUPP
SALES MANAGER**

314 W. Clayton Ave.
Coeur d'Alene, ID 83815
mkrupp@parkersubaru.com
parkersubaru.com

Cell (208) 819-0512
Office (208) 415-0555
Fax (208) 415-0577
Toll Free (800) 505-7353

DAVE LOGUE
President

JONI LUECK
Vice-President

**Selkirk
Aviation
Inc.**

FAA Repair Station #LOGR640X

Specializing In Fiberglass Aircraft Parts

email: selkirkav@selkirk-aviation.com

www.selkirk-aviation.com

(208) 664-9589

Voice Mail 1-800-891-7687

3377 W. Industrial Loop

Coeur d'Alene, ID 83815



(208) 765-8228 • Spokane Toll Free 624-6591
470 Kathleen Avenue • Coeur d'Alene, ID 83815
www.parkertoyota.com



Bob Peters, DVM

(509) 928-MPEH
www.mckinlaypetersequine.com



Certified Public Accountant "Personalized Professional Service"

Jamie Duman, CPA

e-mail: jamie@jamiedumancpa.com

8245 N. Cornerstone
Hayden, ID 83835

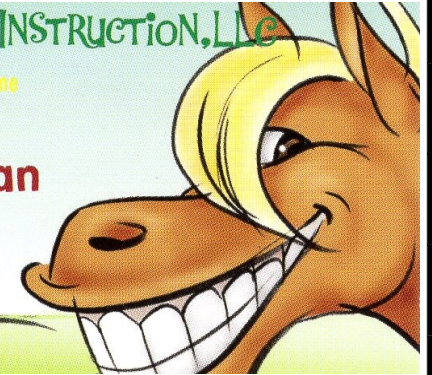
Phone (208) 762-5728
Fax (208) 762-9438

ONE SILLY HORSE RIDING INSTRUCTION, LLC

Let's put the Fun back into your horse time

Candice Countryman

509 -572-8544



April M. Linscott
Attorney

208 762-0203
208 762-0303 fax
alinscott@omllaw.com



8596 N. Wayne Drive, Suite A
Hayden, Idaho 83835



**PROFESSIONAL
REALTY SERVICES**
Professional Realty Services International
Professional Realty Services Idaho

Kimberly Cornelius
Licensed in WA & ID

Mobile: 509-251-3856
KCorneilusRealty@gmail.com

www.ProfessionalRealtyServices.com



Calendar continued from page 1

Chapter meetings are third Wednesday of each month.

August PBCH chapter meeting. Wednesday, August 19. Meeting will be outside of Dalton Garden City Hall in the park. Socialize 6:30 and meeting starts at 7 p.m. Address is 6360 4th St.

September

September 12 Dalton Picnic. Service project for the chapter. Karen Kimball trail boss. Jkkimball01@gmail.com

September 16 PBCH chapter meeting. Third Wednesday of the month. Dalton Garden City Hall, 6360 4th St. Socialize 6:30 and meeting starts at 7 p.m.

September 19 *4th annual Antoine Peak ride and potluck. Joni Lueck Trail boss Jklhorserider@gmail.com See map of the area on the www.pbch.org maps sections. Two-hour and three-hour loops available.

September 26. Back Country Horsemen of Idaho state board of directors' meeting. At this time an in-person or video meeting have not been decided.

October

October 10 Trailmeister Robert Eversole's **Packing Clinic**. Location Dalton Garden City Hall. More info to follow.

October 17 Saturday PBCH chapter meeting. Dalton Garden City Hall. Meetings are now the third Saturday of the month through March 2021.

=====

4th of July Work Party



The trail clearing went great. Stan and Jamie Smith, Karen Kimball and myself did the entire lower Jeannette's Jaunt Trail. It needed some 18 inch stuff cut out. We saw the 24 inch downed tree the Panhandle Nordic Ski Club cut- a monster- glad they did it. Stan did most of the cutting. It could be brushed again, really heavy in some spots. Irv and Susan Walker and a guest didn't cut with us because of members only so they went on their own to lop the scenic view. They were gone by the time we got back to the parking lot. Got back to trailhead about 2:30. For my first time out it was as much as I wanted or could do. My horse Charlie's first ride also.

All safe, Arnie Wilkens.

Photo credit Karen Kimball

2020 PBCH Officers

Julie Volpi, president

1-805-674-6807;

Charlieandjulie01@gmail.com

Karen Kimball, vice-president

And outgoing president

jkkimball01@gmail.com

Audra LaBelle, secretary

Audralabelle@hotmail.com

Bea Christopherson, treasurer

Christobea@yahoo.com

Board members

Bill Clarke 208-687-1968;

Ray Heilman 208-660-2907;

Jill Graham, 208-660-5549;

Joni Lueck, 208-659-9066.

Jerry Shriner, public lands
coordinator

jerryshriner@gmail.com

Joni Lueck, newsletter editor,

jklhorserider@gmail.com

Jill Graham, trail committee
chair email

kooy04@gmail.com

Pee Wee Creek Fun Ride and Campout

Written by Susan Walker

The majority of our group arrived on Friday afternoon. In attendance were Irven and Susan Walker, new member Cheri King, Karen Kimball, Debbi Funke, Julie Volpi, Stan and Jamie Smith, and new member Shauna Britt. There was an all-girls campout happening at the trailhead also but they were polite neighbors and didn't raise too much hell. We set out Saturday morning around 10:30 to ride with lunches and water in our saddlebags. We started out on the John Wayne trail then connected to Pee Wee trail and the Steep Creek trail. The majority of this ride was in the shade with sunshine breaks. Once you top the ridge you will be in full sunshine and can also obtain cell service as everyone's phones started going off. This spot on top of the ridge is the only reception to be had. The trail can be rocky at times and you will cross three bridges on the way up but no water access. There are several connection trails we saw, but they were not mapped. We overshot the Quartz view trail and decided it was a good place to stop for lunch while Irven Walker and Cheri King scouted for another trail connection further up. After lunch we backtracked and rode the upper Quartz trail headed back into camp. We rode 8.4 miles that day and were out riding for just over 3 hours. There is a plan to return to scout the connector trails we encountered as we believe they will loop together but this is just a WAG as of this time.

After the ride, and taking care of our equine partners, most of us jumped in Cheri King's truck with our camp chairs and headed less than a mile to Priest River. Irv Walker volunteered to stay behind at camp to watch our ponies. We took some ice cold beverages and put our camp chairs in the water and enjoyed the parade of rafts, tubes and kayaks going past. Irv did come down for a quick dip, but returned to camp watch duties while the rest of us enjoyed the water. Jamie actually found three fresh water clams. This would be a perfect spot to take the horses for a swim, but would not advise riding the road as motorcycles seem to zoom past at a pretty good clip. The river also has MANY put ins for floating on a hot day. After the refreshing dip, we returned to camp for dinner and conversation.

On Sunday morning we all departed at 8 for a quick ride prior to breaking camp. We all rode the lower Quartz View trail which has an awesome view of the campsite, then Julie, Cheri King, and the Walkers rode a 5-mile loop and the rest of the group split off for a shorter ride.

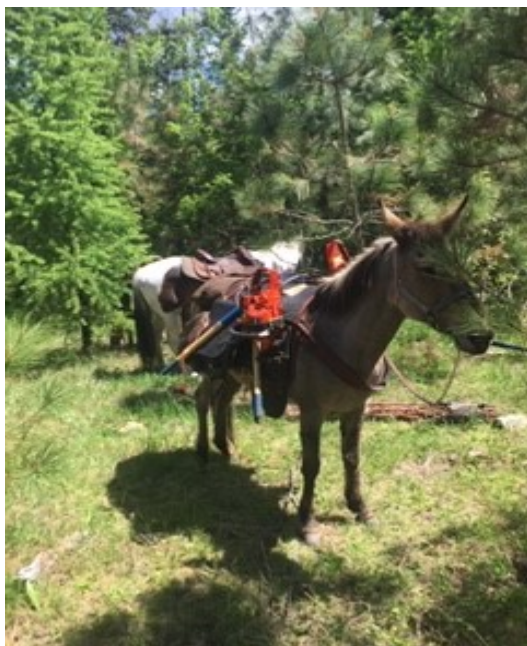
While there was evidence of four wheelers on the trail, we never ran into motorized vehicles or other people on the trail. There is stock water at the campsite but bring up to 200' of hose and a shut off to make it easier to obtain the water as it is a hike to the stock tank carrying water buckets. The camp site has a minimum of 6 high line poles set up and lots of room for trailers. It's a great place for equestrian groups to meet and ride.

Jamie Smith and Karen Kimball trail bosses.

See photos on page 7

Classified Ad

I have a mule I want to sell. Available 14.1 hand molly mule in her mid 20s. Good mule, has packed quite a bit in Bob Marshall etc... but hasn't been used in a couple years. Asking 1000\$ with pack saddle included but very negotiable especially for BCH members.
Contact Jill (208) 660-5549



Hot fun in the summertime

My cowgirl friend Susan Brown of Madras, Oregon, submitted this photo of her daughter Jaylene and horse Diva cooling off in the heat of the day while filling water troughs.

Pee Wee Creek Camp and Fun Ride Event



Photo at left: View from the top of the mountain of Priest River and the valley below.

Right top photo: Riders relax and enjoy the cool water after the ride.

Photos by Julie Volpi

Panhandle Backcountry Horsemen

Chapter Meeting Minutes July 15th 2020

Meeting was called to order at 7:00 by President Julie Volpi

11 members in attendance. One guest, Josh Craig. Welcome 2 new members, Rich Mervin and Moe Brett.

Minutes: motion to waive the reading of the minutes from the last meeting was made by Rich Mervin and 2nd by Betsy Walker. Motion carried by all in attendance.

Treasurer's report: income- membership \$130.00, Calendars \$110.00, Obstacle event \$560.00, Raffle/donations \$199.00, Cook shack \$231.00, interest .07. Total \$1230.07.

Expenses-Karen Kimball for chainsaw/gate \$53.02, bank statement \$2.00. Total \$55.02

Progressive Pot \$42.00 Motion made by Rich Mervin to accept the Treasurer's report, 2nd by Betsy Walker and approved by membership.

Old business:

Obstacle event: Jamie Smith trail boss Obstacle event was very successful. We made \$990. Lots of member help and participation. Thank you to all who made this so great!

4th of July Trail Clearing: had to cancel due to Covid concerns but is going to be rescheduled for Saturday July 18th.

Hot dog ride: also canceled to Covid concerns. Hope to reschedule in the fall of this year.

Chilco Mountain trail clearing: Karen Kimball trail boss. 10 members participated. Lots of motorized trail users and also hikers and bicyclists.

Heyburn State Park trail clearing: 9 members split into 2 groups. One group made it all the way through the Ponderosa Loop which is 15 miles.

New Business:

July 25th and 26th Pee Wee Creek Fun ride and Campout: Karen Kimball and Jamie Smith Trail Bosses. No potluck but the chapter will have burgers and hotdogs to serve up on Saturday night.

August 8th 4th of July Pass Fun Ride: Joni Lueck Trail Boss. Email Joni with any questions jklhorserider@gmail.com

September 12th Dalton Community Picnic: Karen Kimball Trail Boss. Our annual community service. So far it is still scheduled to happen.

September 19th 4th annual Antoine Peak fun ride and potluck: Joni Lueck Trail Boss

October 10th Packing Clinic: Robert Eversole, Dalton Garden City Hall.

Chain saw: The chapter could use a new chain saw. The chainsaw that we need costs \$329.00. Would like to sell old chain saw for \$225. Chapter members get 1st shot at it. Susan Walker made motion to buy new chainsaw and sell old one, Debbi Funke 2nd and was approved by all in attendance. Will also get board approval.

National Headquarters Booklets for hand outs- we are going to look into getting first aid, backcountry manners, etc booklets to hand out.

Trail Bosses: Anyone interested in trail bossing a ride, trail clearing, or event?

Any other items?

No Progressive Pot

Motion made by Betsy walker to adjourn, 2nd by Rich Mervin and passed by members. 7:27 pm

